



Date: 2024 April

Volume: 22

Issue: 4

City Council Corner

By Dan Dean
April 2024

The Winslow Water System is 95% finished installing all new remote-read water meters for all customers. These meters will save time and money and give more accurate and up-to-date readings.

At a special meeting, the council authorized Mayor Jarnagan to contract with a new engineering firm to complete design for a water tower to be installed. This will help alleviate water supply and pressure issues in the system. The project will be funded, in part, through a very low interest loan from the Arkansas Natural Resources Commission Clean Water Revolving Loan Fund.

As always, visit WinslowAR.com for more information about our city. Everyone is invited to Saturday morning Coffee Klatch gatherings at City Hall and to the Saturday Farmers Market downtown from 8:30 to 11:30 (when the weather cooperates). Residents are also welcome to attend City Council meetings on third Mondays at 6pm either in person, or via Zoom.



SPECIAL PUBLIC NOTICE:

**City Council Meeting
Monday April 15, 2024
at City Hall 6:00 PM
Citizens welcome**

**CITY COUNCIL MEETINGS ARE THE
THIRD MONDAY EACH MONTH**

Efforts will be made to Zoom the meetings at:
Online Zoom Meeting @:
<https://us02web.zoom.us/j/7264871421> or by phone @
(312) 626-6799 and enter Meeting ID: 7264871421

If you wish to be on the agenda, please email
Winslowcityhall@gmail.com or leave a message at
(479) 634-3903. Thank you

Winslow's City-Wide Curbside Cleanup Monday - May 6

Curbside for residents within the Winslow city limits
ONLY
DO NOT place items out after the 5th.
Pickup will be staggered.
Hazardous items such as paint and tires will not be
picked up.

Participation is encouraged –
it is an opportunity to get rid of that old
stuff and clean up before summer!

The City of Winslow is an equal opportunity employer and provider.

Editor: Jo Ann Kyle 479-634-3105
Mailing Address: 22288 Kyle Rd., Winslow, AR 72959
E-mail: withinwinslow@gmail.com
Web Site: www.winslowar.com

Meetings

4-H Club 1st Mon. 4:15 PM @ Winslow Library (Old Rock Bldg)

BMFD Board Meeting 2nd Thurs. @ 7:00 PM. BMFS

BMFD meets 2nd & 4th Monday @ 7:00 PM. At BMFD

Friends Of The Library TBA 479 634 3105

Ozark Folkways Guild Board 479-634-3791
2nd Tuesday at 5:30 p.m at Ozark Folkways

United Methodist Women 1st Mon. @ 10 AM. At the church.

WCCA- 3rd Tuesday @ 6 PM. Rock School Building

WCDC 3rd Tuesday @ 6:00 PM @ **Rock School Building**

Winslow City Council
3rd Mon. @ 6:00 PM 479-634-3903@ Zoom 312-626-6799
Zoom Meeting ID 7264871421

Winslow Community Meals Board 479-634-2800
3rd Mon. 5:00 PM @ the Winslow Community Meals Building.

Winslow Home Extension 479-634-3105
3rd Tue. @ 3.00 City |Hall

Winslow Library Hours: 10:00 AM to 5:00 PM
Tuesday, Wednesday, Thursday, & Saturday 479-634-5405

Winslow Museum Meeting 479-634-2020
2nd Tuesday of the month 3:00 at City Hall

Wool & Wheel Hand Spinners
3rd Saturday 10 AM @Ozark Folkways.
& 1st Wednesday each month @ Prairie Grove
Battlefield Park, Latta Barn, Prairie Grove, AR.

- Paper Waits -

By Richard Pearce 3-23-2022

*Paper Waits,
When words arrive as Vagabonds of fate,*

*If love can cover every canvas
Painted without hate,*

*If noble thoughts have interludes
Selecting what is shorn*

*To write my lines
Determined order;*

*And leave them at this gate
Now heaven-borne.*



ROSES & THISTLES



A rose of thanks to Glen and his wife for opening up the 'Upper Room' for sunrise services on Easter morning and for providing the yummy rolls. Larry Smith

BRENTWOOD BLUEGRASS



**1ST AND 3RD SATURDAY
OCTOBER THRU MAY
7:00 PM**



BRENTWOOD COMMUNITY BUILDING

TROY STOUT 479-839--2119



Our Annual Spring Sale Is Here!

Find The Perfect Assortment of **Cedar Lumber**.
Whatever You're Building, Our Selection Of Wood
Makes It Easy To Complete Any Project.
We Also Have An Assortment of Rocks For
All Your Home Improvement Needs. Take Your Pick
Between **Flagstone**, **Caprock**, **Ornamental**, And
Building Stone. Last But Not Least We Have **Firewood**
On Special So Get It While It's Hot!
Darrell Center 479-200-4194

WINSLOW MOBILE PANTRY

GROCERY PICK-UP

SATURDAY April 20, 2024

9:00 – 10:30 or when food is gone
Winslow Community Meals (WCM)

Bring ID

If you are picking up for others,
the maximum is 4 households.

WATCH FOR TRAFFIC
DIRECTIONS

DEVIL'S DEN CELEBRATES SIGNS OF SPRING WITH TWO SPECIAL PROGRAMS

Saturday, April 20th

10 a.m. – 12:00 p.m.

EDIBLES OF THE FOREST HIKE

Join Dr. Tamara Walkingstick, retired Associate Professor of Extension Forestry with the Arkansas Agricultural Extension Service to see the plants of the forest in a whole new way! Dr. Walkingstick will point out plants and their uses on this 1.5-mile walk along the Devil's Den Trail. Meet at the Visitor Center flagpole.

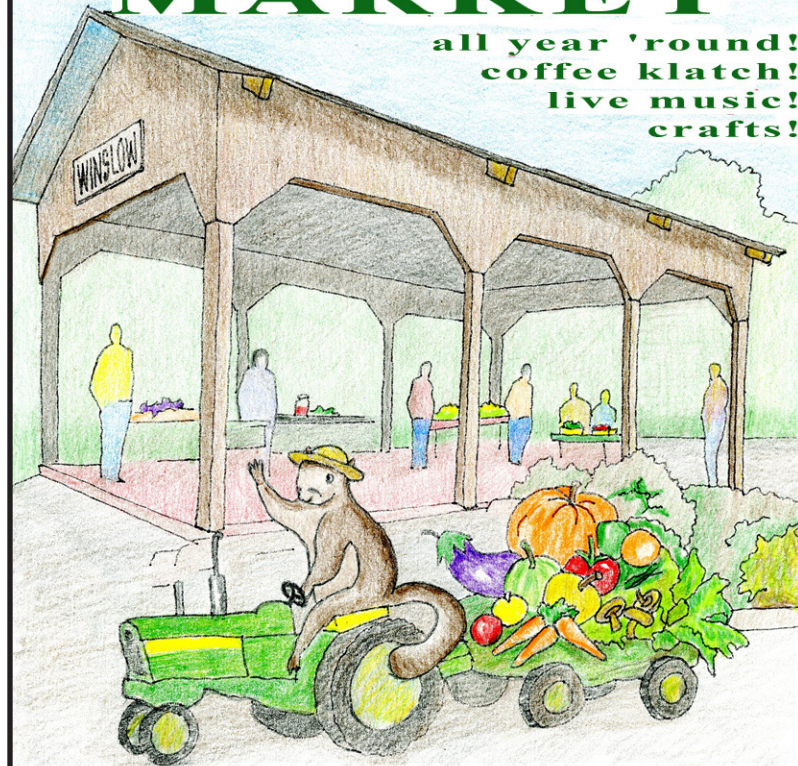
1:30 – 4:30 p.m.

FROM THE FOREST TO THE TABLE: EDIBLE TREES AND PLANTS WORKSHOP

Join Dr. Tamara Walkingstick to learn about the wild plants our grandparents used for food and medicine. For example, acorns make great flour you can incorporate into scones and biscuits. Participants will learn about edible plants and then we'll make a few dishes to enjoy using the different wild plants. The course incorporates concepts of conservation, history, culture, and plant identification while learning to walk on the wild side. Fee for this workshop is only \$15/person. Please pre-register by calling 479-761-3325 to sign up and pay. Workshop is limited so please sign up today. Meet in the Visitor Center Audio-Visual room. Please no one under 8 years of age unless pre-approved.

WINSLOW FARMER'S MARKET

all year 'round!
coffee klatch!
live music!
crafts!



Saturdays 9am-noon
Depot Pavilion Downtown Winslow

You can Assess your Personal Property Taxes
at either the Washington County Court
House, 479-444-1526, or at Scoutassess.com
any time between now and May 2024

Community Yard Sale - April 27

To reserve a 10x10 space
email wcdwinslowar@gmail.com
\$25 due to reserve, \$15 deposit returned
upon arrival day of.

Reservations must be made by April 15.
See flyer on page 8

WINSLOW LOVED ONES WE HAVE LOST

Roberta "Bert" Gabbard

May 22, 1931 - March 25, 2024



Roberta "Bert" Gabbard was born on May 22, 1931, in Johnson, Arkansas. She went home to Heaven on March 25, 2024. Bert was the second of eight children born to her parents Francis "Ellen" Robinson and Troy Branson. On September 15, 1950, she married the love of her life, James "Jim" Gabbard. They had three children: Virginia Hughes, Glenda Kolb, and Darrell

Gabbard (Diane). They primarily lived on the West Coast but moved home to Arkansas upon retirement. Bert volunteered with Meals on Wheels. She was a member of the Blackburn Community Church led by Paster Marsha and her husband James. She loved her church family very much. Bert was a loving wife, caring daughter and sibling, an unwavering mother, and the most amazing grandmother and great-grandmother. Her kindness and unconditional love was felt by all. Bert is preceded in death by her parents, husband Jim, sister Dorothy Drummond, brother J.C. Branson, sister Ethel Moore, sister Linda Moncrief, and her granddaughter Dina Richards. She is survived by her brother James Branson, sister Patsy Basler, sister Brenda Gann, her 3 children, and her many grandchildren and great-grandchildren. Visitation services will be held on Saturday, April 13, 2024, at 11:00 at Moore's Chapel in Fayetteville, Arkansas.

Pauline Masterson

September 7, 1939 - March 19, 2024



Ora Pauline Masterson, 84, of Winslow; passed away Tuesday, March 19, 2024, at Willard Walker Hospice, Fayetteville. She was born Wednesday, September 27, 1939, in Chatman, Arkansas; to Ellis Lincoln and Audra Lillie Mae Cloud Roach.

Pauline was a mother to two children and a member of Blackburn Community Church. Pauline was employed by Campbell Soup for many years and enjoyed spending her days off with her family and her beloved pets. Pauline's green thumb breathed life into gardens blooming with vibrant colors. Alongside her gardening pursuits, she found relaxation in the art of crocheting and delighted in moments spent fishing, finding tranquility by the water's edge.

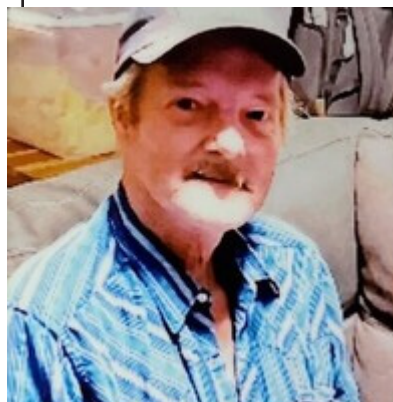
Pauline was preceded in death by her parents, Ellis and Audra Roach. She is survived by her fiancée, Winford Paul Hevron, of

Winslow; two daughters and one son-in-law, Patricia and Kenny Woods, of Harrison; and Debbie Masterson, of Winslow; two grandchildren, and two great-grandchildren. She is also survived by one brother, Clarence Roach, of Farmington, and one sister, Leona Judy, of Monett, Missouri.

The family will receive friends at 1:00 PM, Friday, March 22, 2024, at Brashears Funeral Home. Funeral services will begin at 2:00 PM. Interment will immediately follow services at Ledbetter Cemetery. Services are entrusted to Brashears Funeral Home and Crematory of Huntsville.

PATRICK LYONS

August 19, 1959 - March 13, 2024



Patrick Lyons, age 64, of West Fork, Arkansas, passed away at Washington Regional Hospital in Fayetteville, Arkansas, on March 13, 2024, son of Earshel Marion and Anna Mae (Dennis) Lyons, Patrick was born August 19, 1959, in Tulsa, Oklahoma. He married the love of his life Deborah Susan Butts on October 3, 1976, in Brentwood, Arkansas, she survives; Patrick really enjoyed the outdoors, he loved camping and hunting, spending as much time as possible with his grandbabies.

Survivors include three sons, Patrick Lee Lyons of Winslow, Arkansas, Johnny Alen Lyons of West Fork, Arkansas, and Timothy O'Tool Lyons of Springdale, Arkansas; One daughter, Christina Marie Lyons of Gentry, Arkansas; 11 grandchildren, Cheyenne, Savannah, Jasmine, Wyatt, Johnny Lee, Natasha, Mary, Elijah, Luka, Emma, and Katie; three great-grandchildren; four brothers, Roy Lyons, Leon Lyons, Richard Lyons, and Lloyd Lyons; two sisters, Olivia Lyons and Tonya Lyons..

Preceded in death by his parents, three brothers, Darrel Lyons, Kenneth Lyons, and Marion Wayne Lyons, one sister, Carol Haubert.

Arrangements are under the direction of Cremations Only LLC. In Springdale, Arkansas.



Fort Smith Water Utilities

2023 Annual Drinking Water Quality Report

Este documento contiene información importante acerca del agua potable que usted consume. Si no puede leer este informe, por favor pida a alguien que le ayude a entenderlo.

ລາຍງານນີ້ມີຂໍ້ມູນສໍາຄັນກ່ຽວກັບນໍ້າປະປາຂອງທ່ານ. ຈົ່ງໃຫ້ຄົນອື່ນຊ່ວຍອ່ານໃຫ້ທ່ານ,
ຫລືໃຫ້ຄົນສາກົນໃດຄົນໜຶ່ງທີ່ເວົ້າໃຈລາວ.

Chi tiết này thật quan trọng.
Xin nhờ người dịch cho quý vị.

We're pleased to present to you this year's Annual Drinking Water Quality Report. This report is designed to inform you about the quality water and services we deliver to you every day. Our goal is to provide you with a safe and dependable supply of drinking water, and we want you to understand, and be involved in, the efforts we make to continually improve the water treatment process and protect our water resources.

Where Does Our Drinking Water Come From?

The sources of drinking water (both tap water and bottled water) include rivers, lakes, streams, ponds, reservoirs, springs, and wells Fort Smith Water Utilities has two independent sources. The primary water source is the Frog Bayou Watershed. Water from this watershed is stored at Lake Fort Smith and is treated at Fort Smith's Lake Fort Smith Treatment Plant. The other source is the Lee Creek Watershed. Water from this watershed is stored in Lee Creek Reservoir and is treated at Fort Smith's Lee Creek Treatment Plant.

How Safe Is The Source Of Our Drinking Water?

The Arkansas Department of Health has completed a Source Water Vulnerability Assessment for Fort Smith Water Utilities. The assessment summarizes the potential for contamination of our sources of drinking water and can be used as a basis for developing a source water protection plan. Based on the various criteria of the assessment, our water sources have been determined to have a low to medium susceptibility to contamination. You may request a summary of the Source Water Vulnerability Assessment from our office.

What Contaminants Can Be In Our Drinking Water?

As water travels over the surface of the land or through the ground, it dissolves naturally occurring minerals and, in some cases, can pick up substances resulting from the presence of animals or from human activity. Contaminants that may be present in source water include: Microbial contaminants such as viruses and bacteria, which may come from sewage treatment plants, septic systems, agricultural livestock operations, and wildlife; Inorganic contaminants such as salts and metals, which can be naturally occurring or result from urban stormwater runoff, industrial or domestic wastewater discharges, oil and gas production, mining, or farming; Pesticides and herbicides which may come from a variety of sources such as agriculture, urban stormwater runoff, and residential uses; Organic chemical contaminants including synthetic and volatile organic chemicals, which are by-products of industrial processes and petroleum production, and can also come from gas stations, urban stormwater runoff, and septic systems; Radioactive contaminants which can be naturally occurring or be the result of oil and gas production and mining activities.

In order to assure tap water is safe to drink, EPA has regulations which limit the amount of certain contaminants in water provided by public water systems. Food and Drug Administration (FDA) regulations establish limits for contaminants in bottled water which must provide the same protection for public health.

Am I at Risk?

All drinking water, including bottled water, may reasonably be expected to contain at least small amounts of some contaminants. The presence of contaminants does not necessarily indicate that the water poses a health risk. However, some people may be more vulnerable to contaminants in drinking water than the general population. Immuno-compromised persons such as persons with cancer undergoing chemotherapy, persons who have undergone organ transplants, people with HIV/AIDS or other immune system disorders, some elderly, and infants can be particularly at risk from small amounts of contamination. These people should seek advice about drinking water from their health care providers. More information about contaminants and potential health effects can be obtained by calling the Environmental Protection Agency's Safe Drinking Water Hotline at 1-800-426-4791. In addition, EPA/CDC guidelines on appropriate means to lessen the risk of infection by microbiological contaminants are also available from the Safe Drinking Water Hotline.

Lead and Drinking Water

If present, elevated levels of lead can cause serious health problems, especially for pregnant women and young children. Lead in drinking water is primarily from materials and components associated with service lines and home plumbing. We are responsible for providing high quality drinking water but cannot control the variety of materials used in plumbing components. When your water has been sitting for several hours, you can minimize the potential for lead exposure by flushing your tap for 30 seconds to 2 minutes before using water for drinking or cooking. If you are concerned about lead in your water, you may wish to have your water tested. Information on lead in drinking water, testing methods, and steps you can take to minimize exposure is available from the Safe Drinking Water Hotline or at <http://www.epa.gov/safewater/lead>.

How Can I Learn More About Our Drinking Water?

If you have any questions about this report or concerning your water utility, please contact Don Clover, Environmental Quality Program Manager, at 479-784-2337. We want our valued customers to be informed about their water utility. If you want to learn more, please attend any of our regularly scheduled meetings. They are held on the first and third Tuesday of each month. Meeting times and locations vary. Please call the City Clerk's Office at 479-784-2337 for specific times and locations.

TEST RESULTS

We routinely monitor for constituents in your drinking water according to Federal and State laws. The test results table shows the results of our monitoring for the period of January 1st to December 31st, 2023. In the table you might find terms and abbreviations you are not familiar with. To help you better understand these terms we've provided the following definitions:

Action Level - the concentration of a contaminant which, if exceeded, triggers treatment or other requirements which a water system must follow.

CT - The residual concentration of disinfectant multiplied by the contact time.

Maximum Contaminant Level (MCL) - the highest level of a contaminant that is allowed in drinking water. MCLs are set as close to the MCLGs as feasible using the best available treatment technology.

Maximum Contaminant Level Goal (MCLG) - unenforceable public health goal; the level of a contaminant in drinking water below which there is no known or expected risk to health. MCLGs allow for a margin of safety.

Maximum Residual Disinfectant Level (MRDL) - the highest level of a disinfectant allowed in drinking water. There is convincing evidence that addition of a disinfectant is necessary for control of microbial contaminants.

Maximum Residual Disinfectant Level Goal (MRDLG) - the level of a drinking water disinfectant below which there is no known or expected risk to health. MRDLGs do not reflect the benefits of the use of disinfectants to control microbial contaminants.

NA - not applicable

Nephelometric Turbidity Unit (NTU) - a unit of measurement for the clarity of water. Turbidity in excess of 5 NTU is just noticeable to the average person.

Parts per billion (ppb) - a unit of measurement for detected levels of contaminants in drinking water. One part per billion corresponds to one minute in 2,000 years, or a single penny in \$10,000,000.

Parts per million (ppm) - a unit of measurement for detected levels of contaminants in drinking water. One part per million corresponds to one minute in two years or a single penny in \$10,000.

Picocuries per liter (pCi/L) - a measure of the radioactivity in water.

WTP - Water Treatment Plant

TURBIDITY						
Contaminant	Violation Y/N	Level Detected	Unit	MCLG (Public Health Goal)	MCL (Allowable Level)	Major Sources in Drinking Water
Turbidity (Both WTPs)	N	Highest yearly sample result: 0.12	NTU	NA	Any measurement in excess of 1 NTU constitutes a violation	Soil runoff
		Lowest monthly % of samples meeting the turbidity limit: 100%			A value less than 95% of samples meeting the limit of 0.3 NTU, constitutes a violation	
<ul style="list-style-type: none"> Turbidity is a measurement of the cloudiness of water. We monitor it because it is a good indicator of the effectiveness of our filtration system. 						
RADIOACTIVE CONTAMINANTS						
Contaminant	Violation Y/N	Level Detected	Unit	MCLG (Public Health Goal)	MCL (Allowable Level)	Major Sources in Drinking Water
Strontium-90	N	0.843	pCi/L	NA	NA	Decay of natural deposits
INORGANIC CONTAMINANTS						
Contaminant	Violation Y/N	Level Detected	Unit	MCLG (Public Health Goal)	MCL (Allowable Level)	Major Sources in Drinking Water
Fluoride (Mountainburg WTP)	N	Average: 0.74 Range: 0.64 - 0.83	ppm	4	4	Erosion of natural deposits; water additive which promotes strong teeth; discharge from fertilizer and aluminum factories
Fluoride (Lee Creek WTP)	N	Average: 0.84 Range: 0.80 - 0.97				
Nitrate [as Nitrogen] (Lee Creek WTP)	N	0.28	ppm	10	10	Runoff from fertilizer use; leaching from septic tanks, sewage; erosion of natural deposits
LEAD AND COPPER TAP MONITORING						
Contaminant	Number of Sites Sampled	Number of Sites over Action Level	90 th Percentile Result	Unit	Action Level	Major Sources in Drinking Water
Lead	30	0	<0.001	ppm	0.015	Corrosion from household plumbing systems; erosion of natural deposits
Copper	30	0	<0.020	ppm	1.3	
<ul style="list-style-type: none"> We are on a reduced monitoring schedule for sampling for lead and copper at the customers' taps. The results above are from our last monitoring period in 2022. Our next scheduled monitoring period is in 2025. 						
TOTAL ORGANIC CARBON						
<ul style="list-style-type: none"> The percentage of Total Organic Carbon (TOC) removal was routinely monitored in 2023, at both the Lake Fort Smith and Lee Creek WTPs and all TOC removal requirements set by USEPA were met for both of our sources. TOC has no health effects. However, Total Organic Carbon provides a medium for the formation of disinfection by-products. These by-products include Trihalomethanes (THMs) and Haloacetic acids (HAAs). 						
REGULATED DISINFECTANTS						
Disinfectant	Violation Y/N	Level Detected	Unit	MRDLG (Public Health Goal)	MRDL (Allowable Level)	Major Sources in Drinking Water
Chlorine (Both WTPs)	N	Average: 1.12 Range: 1.02 - 1.22	ppm	4	4	Water additive used to control microbes
BY-PRODUCTS OF DRINKING WATER DISINFECTION						
Contaminant	Violation Y/N	Level Detected	Unit	MCLG (Public Health Goal)	MCL (Allowable Level)	
HAA5 [Haloacetic Acids] (Both WTPs)	N	Highest Running 12 Month Average: 19 Range: 8.28 - 25.3	ppb	0	60	
THM [Total Trihalomethanes] (Both WTPs)	N	Highest Running 12 Month Average: 40 Range: 15.8 - 48.9	ppb	NA	80	



Winslow, AR



Rae Dunn Memorial Exhibit

featuring handmade works and private collection. Over 200 pieces for sale.

On display: April 5 - June 16

Opening Reception: April 5 @ 5-7pm

www.ozarkfolkways.org



UPCOMING EVENTS



**Starting Sourdough
w/ Nena Hammer**
Saturday, April 13 @ 11am



Fiber Play Saturday
April 20 @ 10am



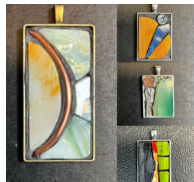
**Two Step and Square Dance
Lesson and Concert**
Saturday, April 27 @ 6pm



**Blacksmithing Demo
w/Wade Frink**
Saturday, May 4 @ 1pm



Community Vegan Potluck
Thursday, April 18 @ 6pm



**Mosaic Jewelry
w/ Stevie Stevens**
Saturday, April 27 @ 1-4pm



Squirrel Jam
Sunday, April 28 @ 5pm



Brick Fields Duo Concert
Saturday, May 11 @ 6pm

Visit our gallery for what you are looking for from everyday self-care to the perfect gift.



As part of our mission to preserve, develop, instruct, and celebrate the arts and crafts of the Arkansas Ozarks, our gallery makes this work familiar to a broader segment of the public, thereby enhancing understanding and appreciation of it.

Support for Ozark Folkways is provided, in part, by the Arkansas Arts Council, an agency of the Arkansas Department of Parks, Heritage, and Tourism, and the National Endowment for the Arts.

WINSLOW STRONG



COME OUT AND CELEBRATE
SPRING WITH US!

WINFEST Spring Fling

FREE LIVE MUSIC - CHILI SUPPER - EVERYTHING AUCTION
3-POINT/FREE THROW CONTEST- HORSESHOE TOURNAMENT

MUSIC BY

JESSE DEAN AND THE HOLLOW QUEENS
SLOWTOWNE SERENADERS
PIPE DREAM WEAVERS
MATTHEW HARRIS

WINSLOW COMMUNITY CENTER
WINSLOW ARKANSAS

NOON-4PM

APRIL 20TH 2024

3rd Annual Winslow Community Multi-Family Yard Sale



Saturday

April 27th

9 am - 2 pm

**At the ballpark on HWY 71
in Winslow**

**Booth reservations must be
made before April 15th**

Email us at:

wcdcwinslowar@gmail.com





The Spiritual Pen

From The Voice Of One On The Top Of Brentwood Mountain!

Part V Understanding the Marks

Last month I told you I would reveal which of Gods ten commandment laws has God's mark in it. It is the fourth commandment, the one that tells us to 'Remember' the Sabbath day telling us who to worship and why we should worship Him. It is also the only commandment where you find the word "Holy": it is found in (Exodus 20:8-11) It reads "Remember the Sabbath day, to keep it holy. Six days shalt thou labor, and do all thy work:

But the seventh day [is] the Sabbath of the LORD thy God:[His name} in it thou shalt not do any work, thou, nor thy son, nor thy daughter, thy manservant, nor thy maidservant, nor thy cattle, nor thy stranger that [is] within thy gates:

For [in] six days the LORD made [His title, Creator] heaven and earth, the sea, and all that in them [is] [His territory], and rested the seventh day: wherefore the LORD blessed the Sabbath day, and hallowed it.

The Sabbath commandment authenticates God as the creator of the universe. It is also a sign of his sanctifying power because He made this day holy and also wants to make us holy. No wonder the Sabbath is targeted by Satan! His rebellion is based on overthrowing God's authority and seating himself on heavens throne. (See Isaiah 14:12-14; Ezekiel 28:2, 6.) It is Satan, symbolized by a dragon (Revelation 12:9), "who gave authority to the beast" (13:4). The power behind the beast and his mark is the devil. Now, notice how concerned this beast power, a symbol for a nation (Daniel 7:17, 23), is with worship (Revelation 12:4-8). This is Satan's rebellion in action. In order to eclipse God, the devil is exalting his own laws, his own authority, his own charter: He [a second beast also given authority by Satan] was granted power to give breath to the image of the beast, (that the image of the beast should both speak, and cause that as many as would not worship the image of the beast should be killed. And he causes all, both small and great, rich and poor, free and bond, to receive a mark in their right hand, or in their foreheads: And that no man might buy or sell, save he that had the mark, or the name of the beast, or the number of his name. (VV13-17).

Through these two beast powers, the devil fabricates a counterfeit system of worship, one based on the principles he cherishes. Following Satan's system will mark you as one of his. And he will pace front and center a mandate a counterfeit "holy day" ---his so called "Sabbath" on which he, "the god of this world" (2 Corinthians 4:4 KJV) will be worshiped.

In these last days, when obedience to God will be threatened with certain death through every nation, one's allegiance will be signaled by which day one keeps holy. By keeping the Sabbath, you confirm your allegiance to your Creator's law of love, life, and liberty (Mathew 22:37-40: Romans 8:2: Jams 1:25)

By obeying the laws of the beast, Satan's counterfeit, you will confirm your allegiance to his reign of terror, selfishness, and sin (John 8:44; John 3:8)

You will choose which mark you will receive.
Next month part VI Sealed by the Spirit,
Keep the faith,
Larry Smith

NOTICE

**YOUR INHERITANCE
IS WAITING
AND UNCLAIMED.
INQUIRE AT
BUNYARD CHURCH
SUNDAY 10:00 AM**

BRENTWOOD CEMETERY

Do you have friends or family buried in the Brentwood Cemetery north of Winslow, Arkansas? Please help us keep the lawn mowed by sending a contribution to:

Brentwood Cemetery Fund,
% Mrs. Beverly Stout,
15653 Canfield Rd,
West Fork, AR 72774. Phone 479-839-2119

WINSLOW AREA CHURCHES INVITE YOU TO ATTEND THE CHURCH OF YOUR CHOICE

ASSEMBLY OF GOD

Perry Hall, PASTOR PH. (479)263-0469 Church 479-634-5581

Sunday School	10:00 A.M.
Worship	11:00 A.M.
Evening Service	6:00 P.M.
Wednesday Eve Prayer meeting	7:00 P.M.

BIDVILLE COMMUNITY

Eugene Provence, Pastor

Sunday School	10:00 A.M.
Worship	11:00 A.M.
Evening Service	7:00 P.M.
Wednesday Eve Service	7:00 P.M.

BLACKBURN COMMUNITY

Marsha Cooley, Pastor

Sunday School	10:00 A.M.
Worship Service	11:00 A.M.
Youth Group	5:00 P.M.
Sunday Evening Service	6:00 P.M.
Wednesday Bible Study	6:30 P.M.

BOSTON MOUNTAIN FELLOWSHIP

Bro. Dennis Hall . 479-634-7631

Hwy 71 North, Winslow

Sunday School	10:00 AM
Sunday Worship Service	10:45 AM
Wednesday Service	7:00 PM

BRENTWOOD HILLTOP CHAPEL

SEVENTH-day ADVENTIST CHURCH

Located On Washington Co. Rd. 39

Larry Smith, Pastor . (479) 595=5875

Sabbath (Saturday) Services

Sabbath School	10:00 A.M.
Worship Service	11:00 A.M.

BUNYARD CHURCH

Jerry Bromley, Pastor. (479) 305-4321

Sunday School	10:00 A.M.
Worship	11:00 A.M.

HAZEL VALLEY COMMUNITY CHURCH

Jasper Hankens

Sunday School	10:00 A.M.
Worship	11:00 A.M.
Sunday Evening Service	6:00 P.M.
Wednesday Eve Service	7:00 P.M.

LADY OF THE OZARKS CATHOLIC CHURCH

Fr. John Antony Pastor

Parish Administrator Mike Henry, DEACON 479-530-3792

Sunday Mass	9:30 A.M.
Confession On Sunday	9:00 A.M.

MOUNTAINBURG PRESBYTERIAN CHURCH

Hwy 71 Mountainburg AR

Rev Jeff Parker, Pastor Church 479-369-2761

Sunday School	9:30 A.M.
Sunday Worship	10:30 AM
Bell Practice	Wednesday 6:00 PM
Choir Practice	Wednesday 7:15 PM
Mountainburg Presbyterian Women	Tuesday 10:00 AM
Mountainburg Presbyterian "Food Pantry"	4th Saturday of each month
Men's Coffee	Daily 8:00 AM

PIGEON CREEK FREEWILL BAPTIST CHURCH

1421 Pigeon Creek Rd. Mt. Burg

Justin D. Allen, Pastor

Sunday School	9:45 A.M.
Worship	10:45 A.M.
Evening Service	6:00 P.M.
Wednesday Eve Service	7:00 P.M.

UNION CHURCH AT BAPTIST FORD, GREENLAND

Ervin Hutchins, Pastor

Sunday School	10:00 AM
Sunday Worship Service	11:00 AM
Sunday Evening Service	6:30 PM
Wednesday Bible Study	6:30 PM

UNITY COVENANT CHURCH WEST FORK

Brian Bowerman, Pastor 479-839-3948

14680 Union Starr Rd. West Fork. AR

www.unitycovenant.org

Worship	Sunday Morning	10:00 A.M.
Evening Service		6:00 P.M.
Wednesday Evening		7:00 P.M.

WINSLOW UNITED METHODIST (WUMC)

261 Hill St, Winslow, AR 72959

Pastor:

Sunday A.M. Worship –	10:00 A.M. (New Time)
Sunday A.M. Bible Study –	9:00 A.M.
Sunday A.M. Children's Church –	10:00 A.M.
Wednesday Wow –	1st & 3rd Wednesdays.
Choir Practice –	Tuesdays – 6:30 P.M.

https://www.facebook.com/WinslowUMC?ref_type=bookmark

WINFREY VALLEY TABERNACLE

Brother Roy Biswell, Pastor 479-634-5881

Sunday School	9:00 A.M.
Worship	10:00 A.M.
Evening Service	6:30 P.M.
Wednesday Eve Service	7:00 P.M.

WINSLOW CHURCH OF CHRIST

P.O. Box 40 Zip 72959

Robb Hadley 479-799-1541

Search On Channel 29/40	7:30 A.M.
Morning Bible Study	10:00 A.M.
Morning Worship	10:45 A.M.
Evening Worship	6:00 P.M.
Wednesday Bible Study	7:00 P.M.

WINSLOW FIRST BAPTIST CHURCH

Greg Dold, Pastor 479-765-3003

Sunday School	10:00 A.M.
Worship	11:00 A.M.
Evening Service	6:00 P.M.
Wed Night Free Meal	6:15 P.M.
Following will be all groups Activities and Bible Study	7:00 PM

Please check over the respective churches and let me know if the pastor is correct, the time for Sunday School and Worship services are correct.

Thank you.

479-634-3105 If no answer please leave a message